



Outreach Child Support

Bldg. No. 40/672 (35/201 B), PHRWA 55
Power House Link Rd., Palarivattom P.O.
Kochi 682025, Kerala, India.
Tel: +91 484-406 66 71/72, +91 956 2489 489
Email: office@outreachchildsupport.com
www.outreachchildsupport.com

A Project of Jeevana Samridhi



Jeevana Samridhi (Reg. No. 2006/409) is a registered social charitable trust, founded by a group of visionary professionals. The trust was established in response to the heart-wrenching realities of suffering and deprivation, both natural and manmade, that we see all around us. This public charitable trust is dedicated to providing channels of solidarity and support to the most vulnerable sections of society, regardless of caste or creed.



**TOGETHER
WE STRIVE
TOWARDS
A BETTER
TOMORROW**

EDUCATION IS EVERY CHILD'S RIGHT



Education is the basic fundamental right of every child! When a child is denied this right due to financial constraints, the best possible response is to accompany them with all possible means.

'Outreach Child Support' is the positive response of a group of young people against the denial of a child's basic right to education. Accompanying them in their journey of education, our wider intention is a holistic development of their identity.

The intended beneficiaries are school-going students all over India. Each child is provided a financial aid every month, to meet their education expenses. Over the past years, more than 13,000 children have fulfilled their educational dream through this project.

THE MASTERPLAN

Beneficiaries are selected through direct application or recommendation of an OCS Volunteer.

Project volunteers are assigned to manage the project in different parts of India, from screening applications to following up on beneficiaries in their respective areas.

Extraordinarily talented students are offered suitable options.

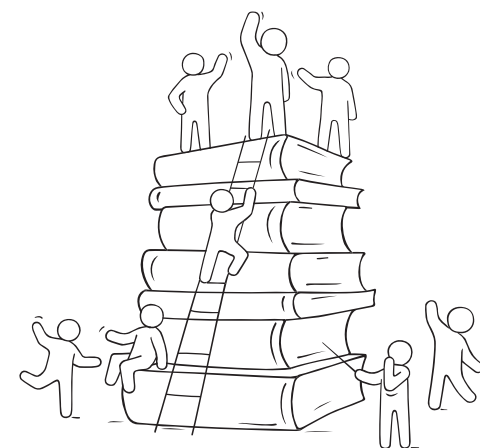
In summer, value-based camps and gatherings are organized for all beneficiary children.

JOIN US FROM WHEREVER YOU ARE.

For more details reach at:
+91 92071 28882
office@outreachchildsupport.com



JOIN US TO CHANGE A CHILD'S FUTURE



BUT WHAT CAN I DO?

You can sponsor a child (or more!)
Want to volunteer?
If you can give us at least 4 hours a week, saddle up and jump in (in the office/on the field)
Make this part of your personal Mission. Spread the word!

**YOUR LITTLE SHARE
GOES A LONG WAY!**